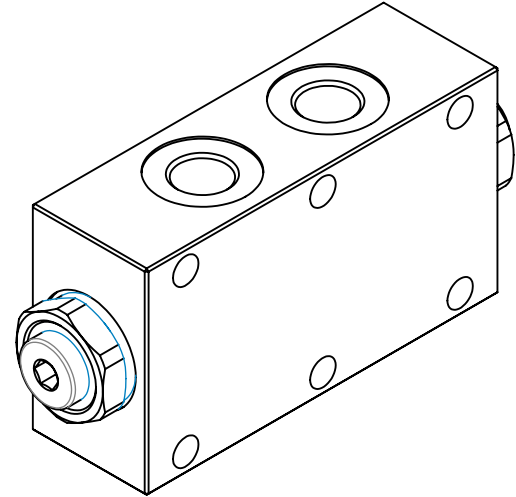
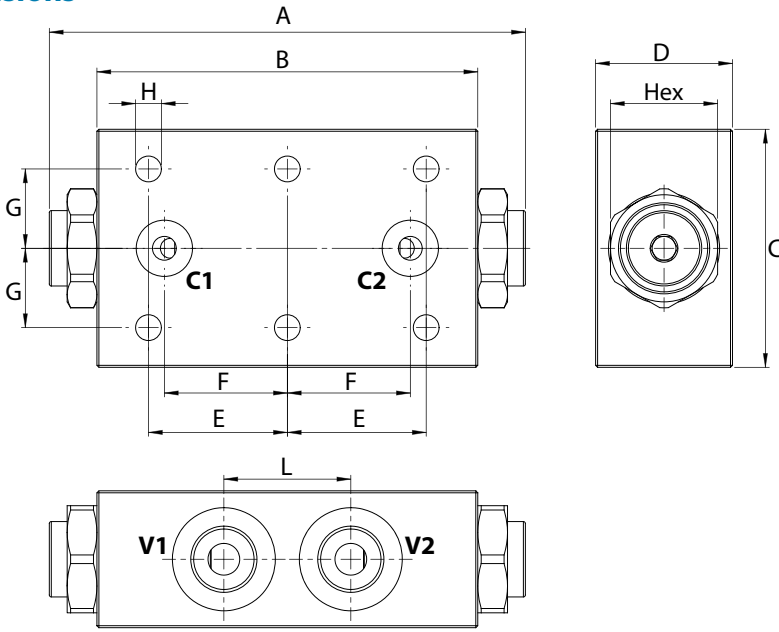
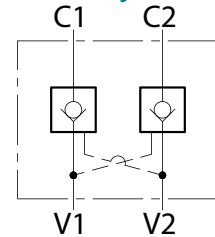


Dimensions



| Size | V1-V2 BSP | A | B | C | C1-C2 | D | E | F | G | H | L | Hex | Weight kg |
|------|--------------|-----|-----|----|-------|----|------|------|----|------|----|-----|--------------|
| 01 | 1/4 | 113 | 90 | 50 | Ø 5 | 30 | 35 | 26 | 20 | 6,5 | 32 | 22 | 0,43 |
| 15 | 3/8 | 113 | 90 | 50 | Ø 5 | 30 | 35 | 26 | 20 | 6,5 | 32 | 22 | 0,43 |
| 02 | 3/8 | 113 | 96 | 60 | Ø 6 | 35 | 35 | 31 | 20 | 6,5 | 32 | 27 | 0,60 |
| 25 | 1/2 | 113 | 96 | 60 | Ø 6 | 35 | 35 | 31 | 20 | 6,5 | 32 | 27 | 0,60 |
| 03 | 1/2 | 140 | 110 | 70 | Ø 10 | 35 | 40 | 32,5 | 20 | 8,5 | 34 | 30 | 0,89 |
| 04 | 3/4 | 220 | 165 | 90 | Ø 14 | 50 | 67,5 | 52,5 | 25 | 10,5 | 50 | 41 | 2,50 |

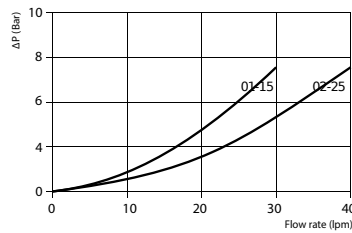
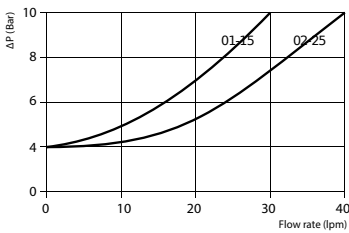
Hydraulic Symbol



Curves

V1 → C1
V2 → C2

C1 → V1
C2 → V2



Features

| Size | 01 | 15 | 02 | 25 | 03 | 04 |
|-------------------------|-----|-----|-----|-----|-------|-----|
| Max Pressure (bar) | 260 | 260 | 260 | 260 | 260 | 260 |
| Max Flow (lpm) | 20 | 20 | 35 | 35 | 60 | 100 |
| Pilot Ratio | 1:4 | 1:4 | 1:7 | 1:7 | 1:3,4 | 1:4 |
| Cracking Pressure (bar) | 4 | 4 | 4 | 4 | 3 | 8 |

Materials: Aluminium manifold, hardened steel inner parts.

Ordering Code

LVDF --

| | Size BSP |
|-----------|----------|
| 01 | 1/4 |
| 15 | 3/8 |
| 02 | 3/8 |
| 25 | 1/2 |
| 03 | 1/2 |
| 04 | 3/4 |

Ordering Code Example: LVDFV15 = 3/8 BSP, 20 lpm.